



Federation of Pinvin C of E First School and St Nicholas C of E Middle School

Main Street, Pinvin, Worcestershire WR10 2ER

Federation Head teacher: Mrs Sandra Jennings

Together, we inspire, discover and achieve

Dear Parents & Carers,

We would like to say thank you to the Parents and Carers who have joined us on our journey as a collaborated Friends group - **Pinvin Friends (Friends of Pinvin Federation)**. To help spread the word, please do follow our Facebook page which is called 'Pinvin Friends' which will provide you with details of upcoming fundraising events and future meeting reminders. We are sending out half termly bulletins which will remind you of our future fundraising events and space on the newsletter each week.

Thank you again for your support with Break the Rules day which raised a huge £512.30!

Bag2School

On Friday 3rd of December, **Bag2School** will come and collect all of your unwanted items (list below) - all you simply need to do is pop them in a **black bin bag and drop them off at reception ready for this date** (Mrs Goss will be on hand at the Pinvin First gate to take these off you). The bags are taken away and weighed, then in return we receive a cheque which we can put towards making our school an even better place! *We will let you know how much we raise!*

The clothing will make journeys all over the world starting their new life! This could be a purpose-built second-hand store in Eastern Europe or South America, or a market stall in East or West Africa, providing valuable employment for importers, warehouse staff, transport companies and stall holders as well as affordable clothes for local people. It is a win: win situation for all.



Bag2School accept the following 'good quality' items only:

- Men's, Ladies' and Children's clothing
- Paired shoes (tied together)
- Handbags, hats and bags
- Scarves, ties, jewellery & belts
- Lingerie and socks
- Soft toys
- Household linen, curtains and towels
- Household bedding (bed sheets, pillow cases and duvet covers)

Bag2School DO NOT accept:

- Duvets and blankets
- Pillows and cushions
- Carpets, rugs and mats (including bath, shower and toilet mats)
- Soiled, painted, ripped or wet clothing
- School uniforms with and without logo
- Corporate clothing and workwear
- Textile off cuts, yarns or threaded material

Tel: 01386 554196
office@pinvinfed.co.uk

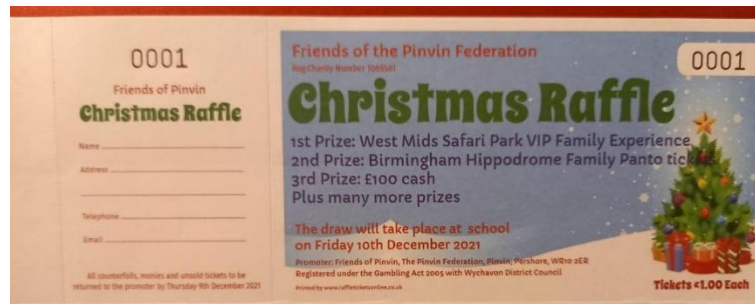
www.pinvinfed.co.uk



Christmas Raffle Tickets

Today, each child will have brought home two books of raffle tickets for the ***Friends of the Pinvin School Christmas Raffle Draw*** – please check the bottom of their bags for a white envelope!

The tickets are £1.00 each and in books of 5. As a starting point and for ease, we have released **two books per child** - we recognise that there are families with multiple siblings in the school, please do return unwanted tickets back to the office; there is no pressure to sell them all. Alternatively, if you require more tickets, please do ask the fantastic office staff for more.



This Christmas Draw will no doubt be our biggest fundraiser. With your generous help we aim to raise a substantial amount which has the potential to utterly transform our fundraising for the year. The staff, children and PTA are currently putting together a wish list for the Federation.

The top 3 prizes include:

West Midland Safari Park VIP Family Experience

Birmingham Hippodrome Family Pantomime Tickets

£100 cash!

The PTA have been working incredibly hard to provide you with many more incredible prizes from: local food vouchers, experience vouchers, cinema vouchers, Gin, beauty vouchers, a beautiful Fortnum & Mason hamper – the list goes on, there is something for everyone! See the school newsletter to eye spy some of the logos associated with our raffle draw.

As an **extra incentive** for the pupils to sell their tickets, the top three classes selling (on average) the most tickets will receive an afternoon off timetable with a film and snacks.

Completed ticket stubs and cash need to be returned no later than **Wednesday 8th December.**

We will draw the raffle within school on **Friday 10th December** and the lucky winners will be contacted via phone or email. Dependent on the prize, you may have to collect from school before the end of term.

Thank you so much for all of your support – it really does make a difference.

The Friends of Pinvin Federation

Tel: 01386 554196
office@pinvinfed.co.uk

www.pinvinfed.co.uk

The Pinvin Federation of Schools is part of The Diocese of Worcester Multi Academy Trust, which is a charitable company limited by guarantee and registered in England and Wales with registered number 10390487. Its registered office is at The Old Palace, Deansway, Worcester, Worcestershire, WR1 2JE.